

BEST COMMERCIAL PROJECT \$1M - \$2M

WINNER



Stephen Lawrence Constructions

PROJECT LOCATION

Lockhart Council Offices
LOCKHART

JUDGES COMMENTS

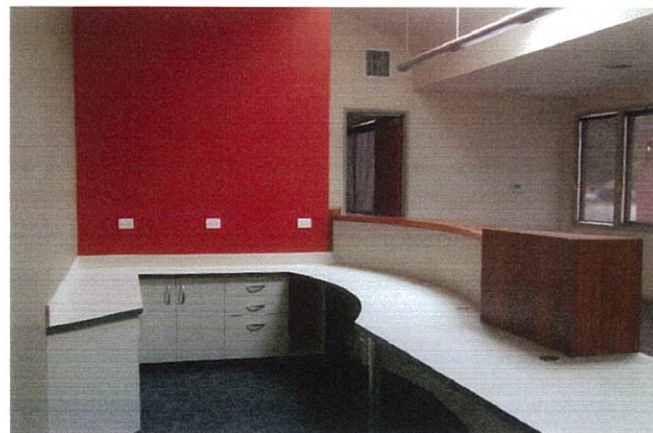
Lockhart shire council required the construction of a commercial building for their administration staff, council chambers, meeting rooms and space for public use including a complete fit out.

The client needed the building to incorporate a very high level of water and energy efficiency and sympathetic to the historic character of Lockhart being known as the "verandah town".

Extensive joinery and horizontal timber features using local Australian White Cyprus battens was used throughout the chambers, entry and hallways.

The end result is the completion of an innovative and energy efficient council building in Lockhart and an asset to the Shire.

The judges commended the builder on the difficulties of construction which was impeded by local flooding twice in one month and praised the end result.



PROUDLY SPONSORED BY

